

Community  
Engagement  
& Education

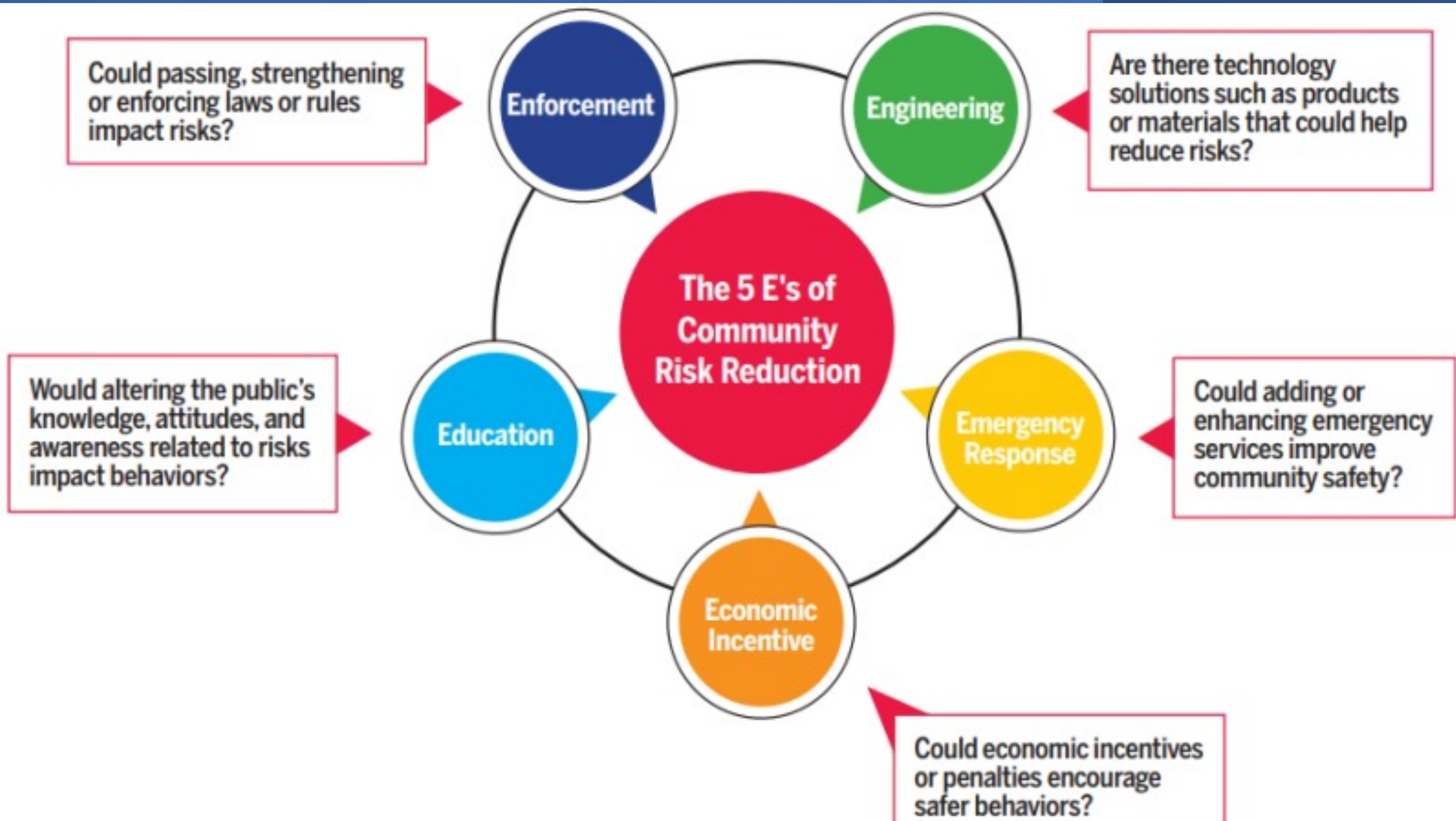


**NO MORE  
UNDER**



**NO MORE  
UNDER**







# Community Engagement & Education

- Is the involvement and participation in an issue or organization for the welfare of the community.
- Brings awareness of dangers that community members may not know of or think about.
- Allows people to feel a sense of empowerment.

**What are the Biggest  
Challenges in your  
Community?**

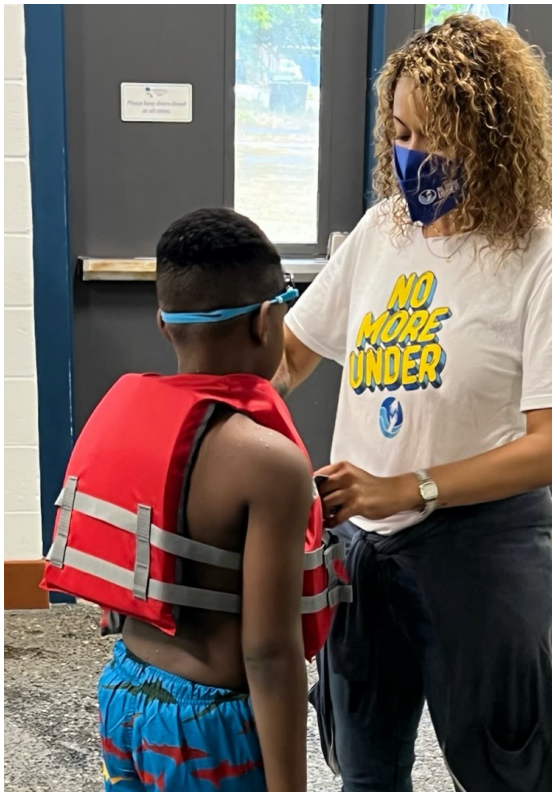


# Ways to Engage

- Community Events
- Partner with Local Organizations
- Social Media / Newsletter
- Sharing the Journey



**YOU are the  
Heroes of Our Community**



# Work With Us!

[www.nomoreunder.org](http://www.nomoreunder.org)



Questions?  
Comments?



**NO MORE  
UNDER**